



LUXURIOUS &
EXCLUSIVE HOMES

Specifications that make interiors soothing

STRUCTURE

Earthquake resistant R.C.C. frame structure duly vetted & certified.

EXTERNAL

Most modern & elegant finish with high quality weather proof coated texture paint.

INTERNAL FINISH

All internal walls plastered & painted in pleasing colors of oil bound distemper, ceiling white. Plaster of paris punning & cornices in Drawing/Dining room and Bedrooms.

FLOORING

Drawing/dining/kitchen to have vitrified tiles, Bedrooms to have vitrified/wooden laminated flooring. Ceramic tiles flooring in toilets and balconies.

HARDWARE

All shutter hinges in steel. All internal and main entrance door frames with aluminium powder coated fittings with mortise locks in Bedrooms. All external doors and windows with aluminium fittings.

KITCHEN

Granite working platform. Up to 2 ft. glazed ceramic tiles above it with stainless steel sink.

FIXTURES & FITTINGS

All copper wiring in P.V.C concealed conduit. Provision for adequate light and power points as well as telephone & TV outlets with modular switches and protective M.C.B's.

WATER SUPPLY

Underground and overhead water tanks with pumps for uninterrupted supply of water.

TOILETS

Provision for Hot & Cold water system without gysler. Glazed tiles in pleasing colours on walls up to door level. European W.C's, washbasins & cisterns in white shade of Standard make. Chrome Plated fittings of standard make.

DOORS

Designer Flush with Polish

BALCONIES

MS (steel) railing with Texture paint on walls.

LIFT LOBBIES/CORRIDORS

Marble flooring, wall and ceiling oil bound distemper with modern light points.

STAIR CASE

High quality marble.

features that add class to your lifestyle

- Strategic location in heart of Greater Noida West at main kisaan chowk with 2 side 425 feet wide and 1 side 80 feet wide road.
- 2 side open plot that ensures proper light & ventilation.
 - Maximum open area with beautiful landscape.
 - Walking track within the compound.
 - Swimming pool with kids splash pool.
 - Air-coditioned gym.
 - Club with all modern facilities.
 - Vastu compliant layout.
 - 24 hours security with CCTV and intercom.
 - 24 hours power back-up & water supply.
 - Rain water harvesting
- Scientifically designed layout with proper ventilation.

Site Plan



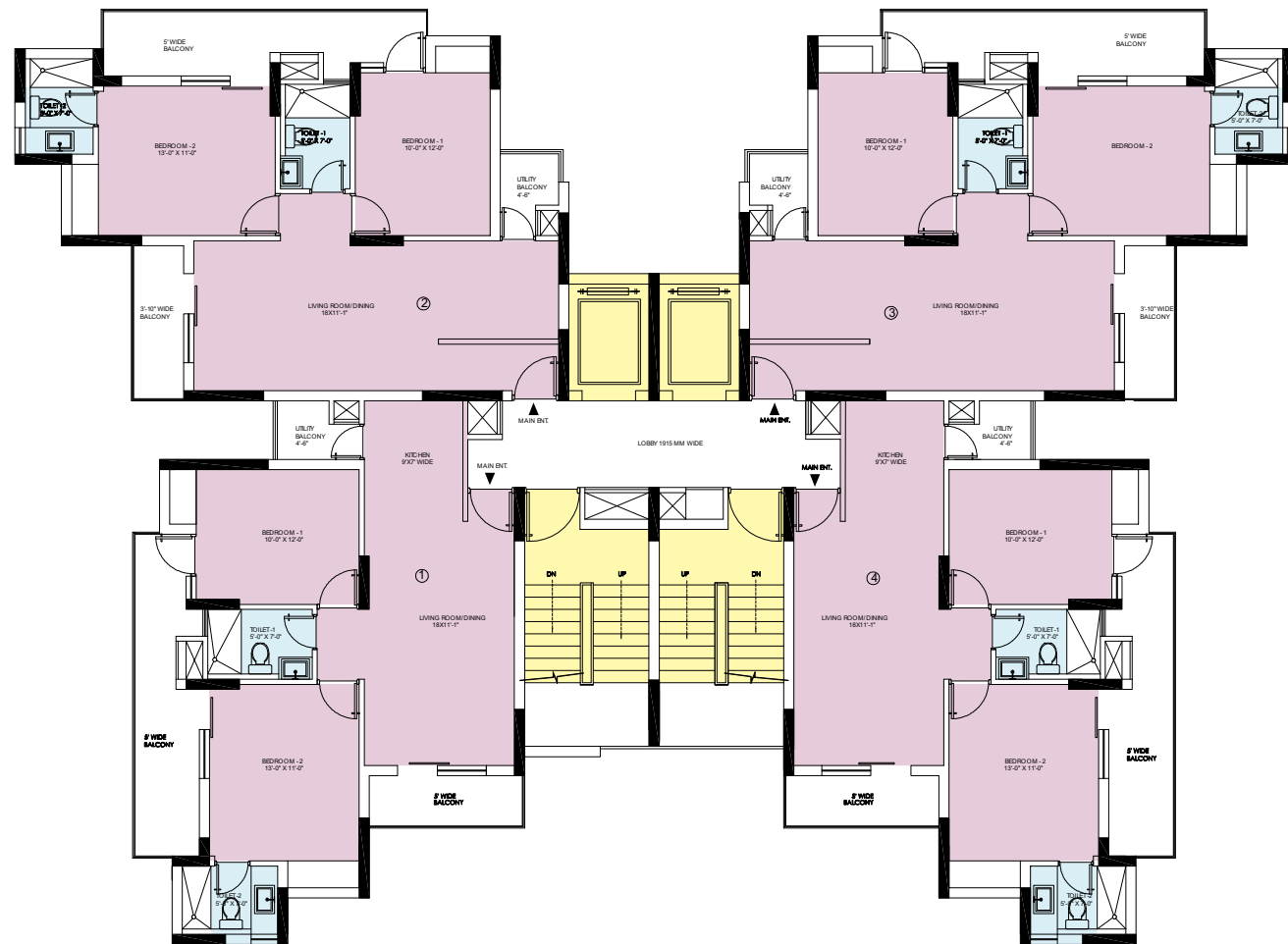
- 1. Badminton
- 2. Mountain
- 3. Pavilion.
- 4. Tennis Court
- 5. Basket Ball Court
- 6. Lawn
- 7. Jogging Track
- 8. Sand Pit
- 9. Yoga Lawn
- 10. Club

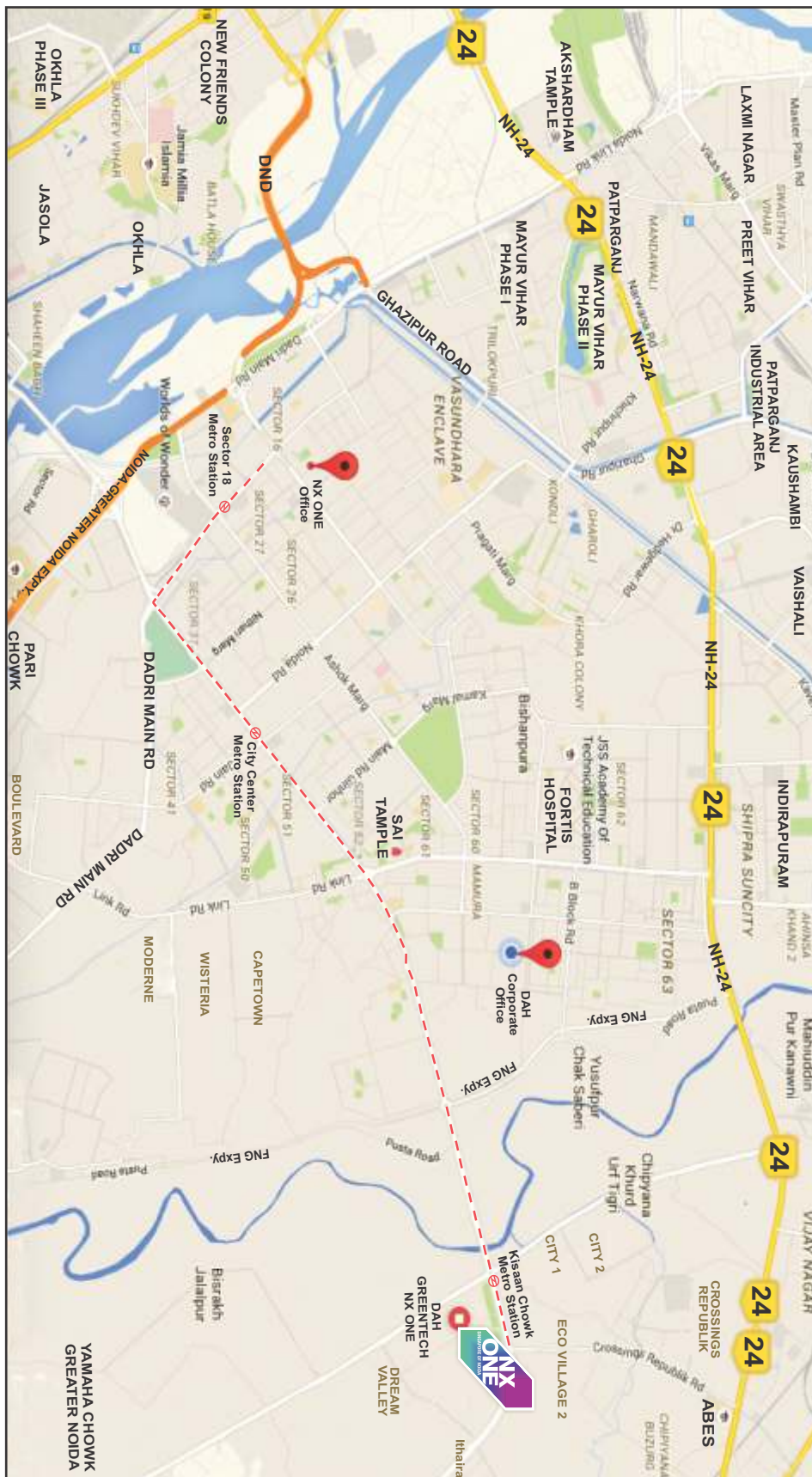


All specifications, designs, layout, images, conditions are only indicative and some of these can be changed at the discretion of the builder/architect/authority. These are purely conceptual and constitute no legal offerings. 1sqm = 10.764 sq. ft.,

Cluster Plan
2 BHK

Floor Plan (2 BHK)
Super Area 1150 sq. ft.





SP SAI IT Pvt. Ltd.

Corporate office: C - 26, Sector - 67, Noida 201301.

Site Office: Plot No -17, Tech Zone – IV, Greater Noida (West), U.P.

Ph.: +91- 9540 222 555 | E-mail: info@nx-one.com | www.nx-one.com